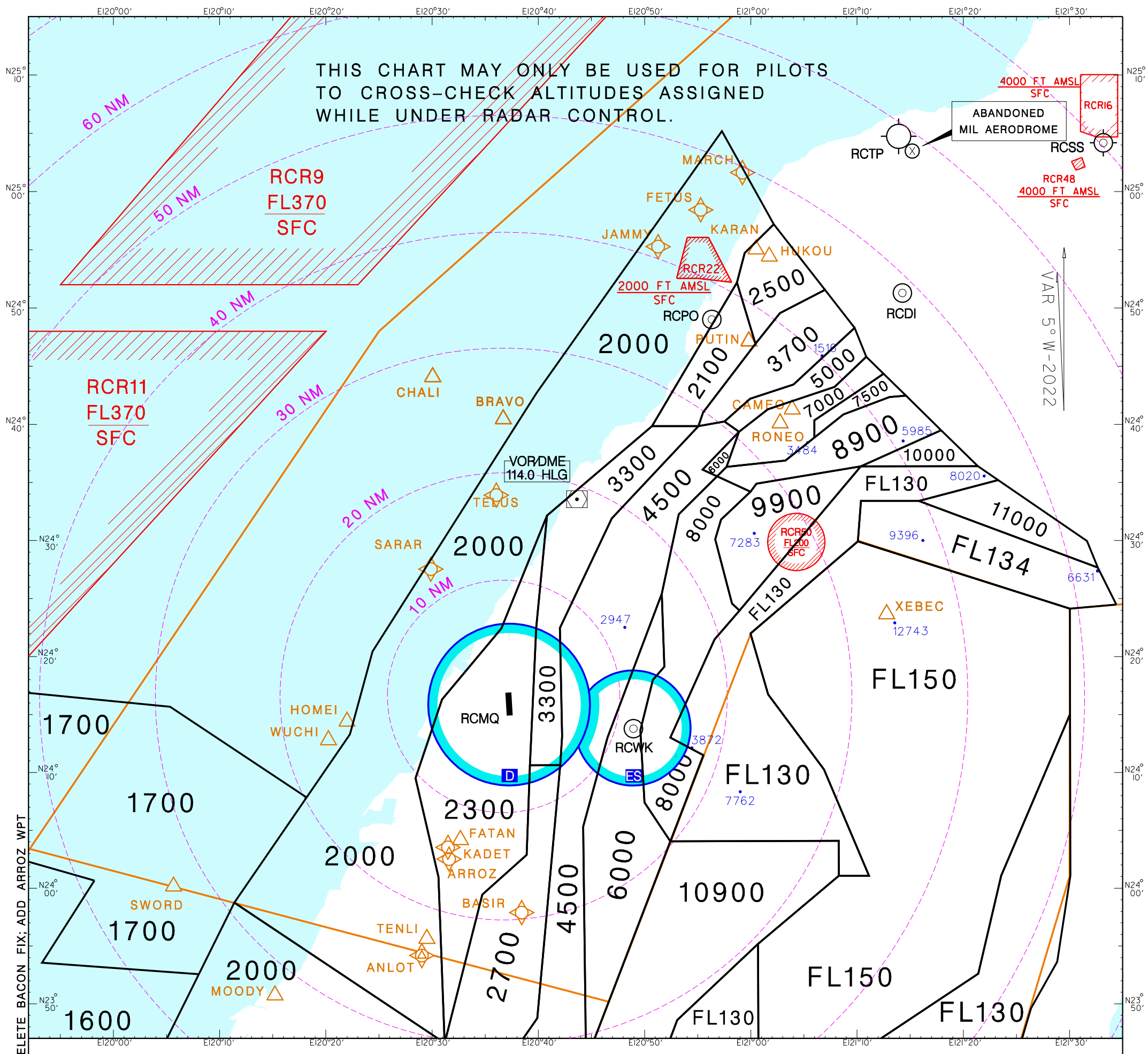


航管監視最低高度圖
ATC Surveillance
Minimum Altitude Chart

AD ELEV.
RCMQ 665FT

TAIPEI APP 129.6 130.1 257.8	CCK TOWER 118.75 120.25 ATIS 127.75
------------------------------------	---

臺中/清泉崗機場
Taichung/Cingcyuangang Aerodrome



NOTE

1. Range marks are centered at Taichung ASR/MSSR RADAR (241534N 1203644E).
2. Minimum altitudes are calculated taking into account of minimum clearance above terrain/obstacles. Radar control service cannot be provided to aircraft below the applicable minimum. However, aircraft at designated altitude in relevant sector is not assured of radar contact.
3. Altitudes, Levels, Heights are in feet.
4. Only significant spot heights are shown.
5. LOSS OF COMMUNICATION
 - a. SQUAWK 7600 immediately, and
 - b. follow AIP ENR 1.6.4 "Radio Communication Failure Procedures."

Transition level: FL130
Transition altitude: 11,000ft

CHANGES: UPDATE MAG VAR; DELETE BACON FIX; ADD ARROZ WPT